

# Maine's 2014 Ozone Season NOAA 12Z Model Performance

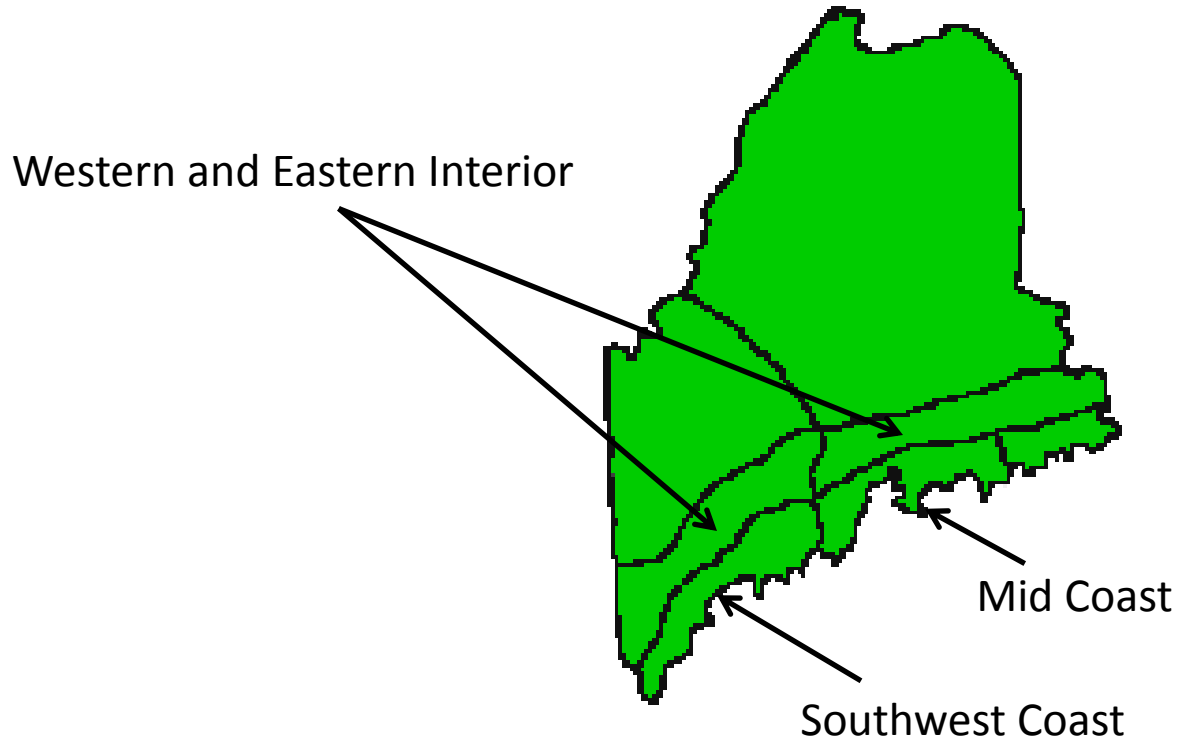


Tom Downs, CCM  
Chief Meteorologist  
Bureau of Air Quality

MAINE DEPARTMENT OF ENVIRONMENTAL PROTECTION

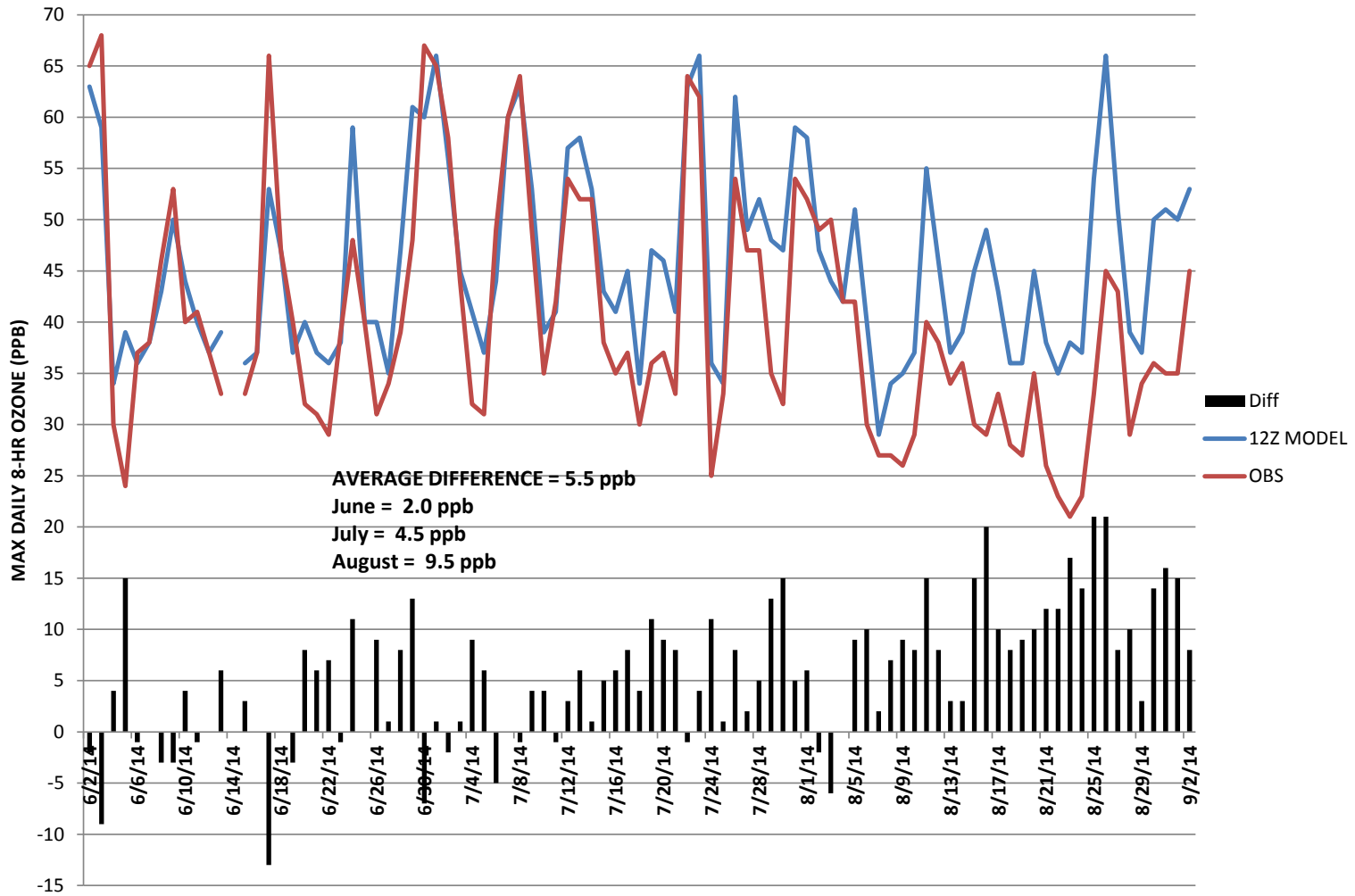
*Protecting Maine's Air, Land and Water*

# Maine's Forecast Regions



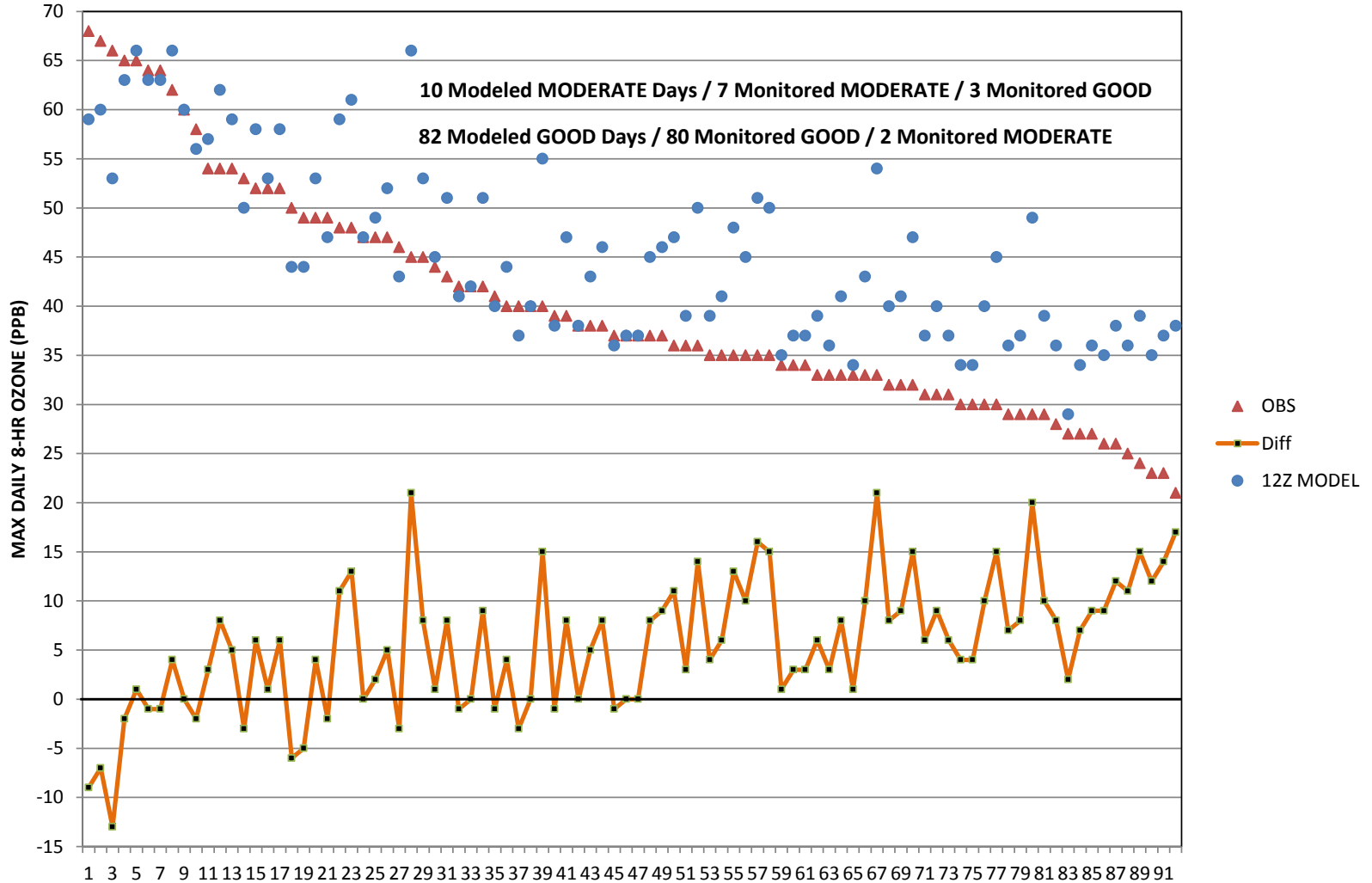
# Interior Regions

## Maine Interior Max Daily 8-hr Ozone NOAA 12Z Model Predictions vs Observations



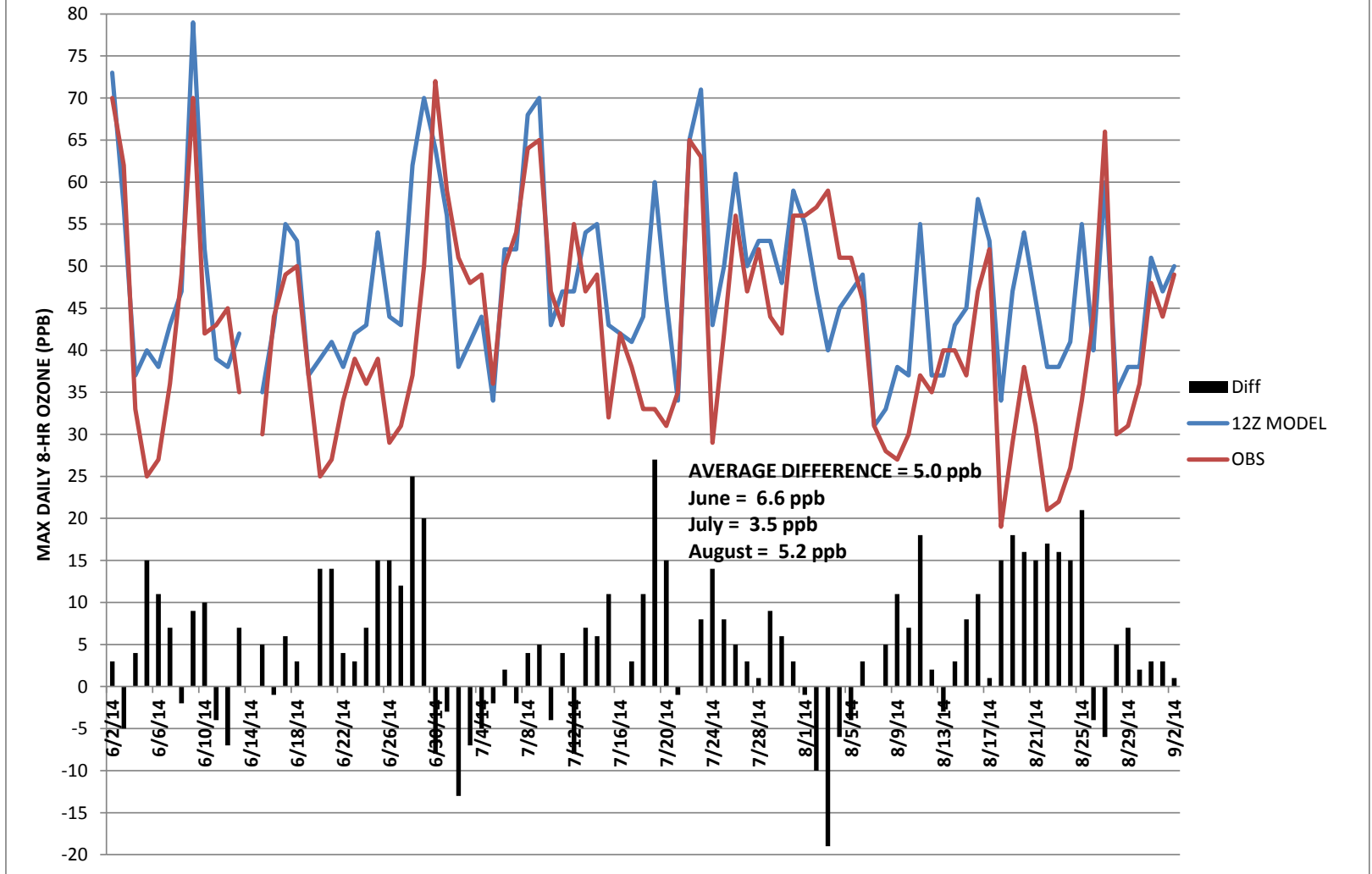
# Interior Regions

## Maine Inland Max Daily 8-hr Ozone NOAA 12Z Model Predictions vs Observations



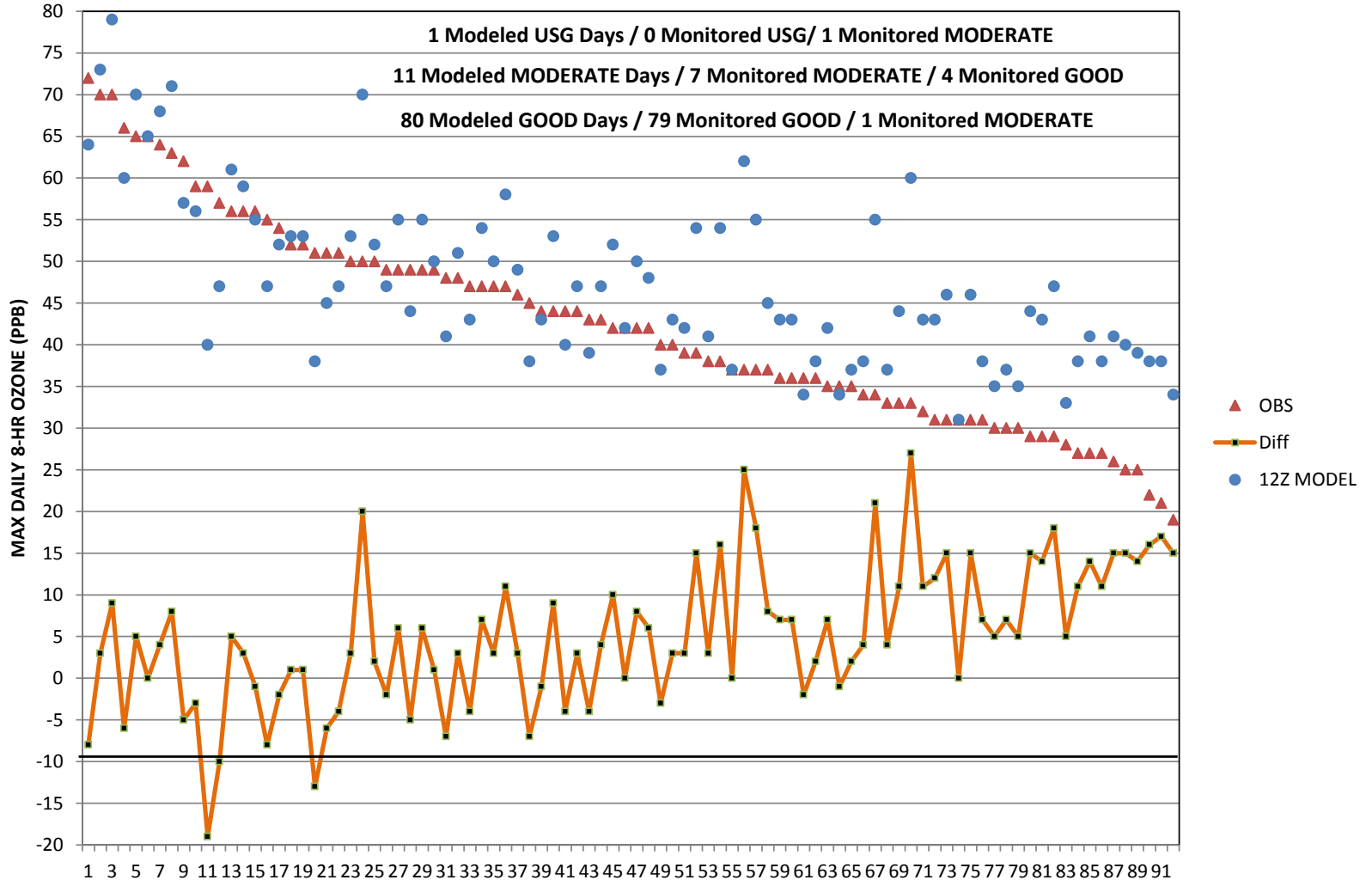
# Mid Coast Region

## Maine Mid Coast Max Daily 8-hr Ozone NOAA 12Z Model Predictions vs Observations



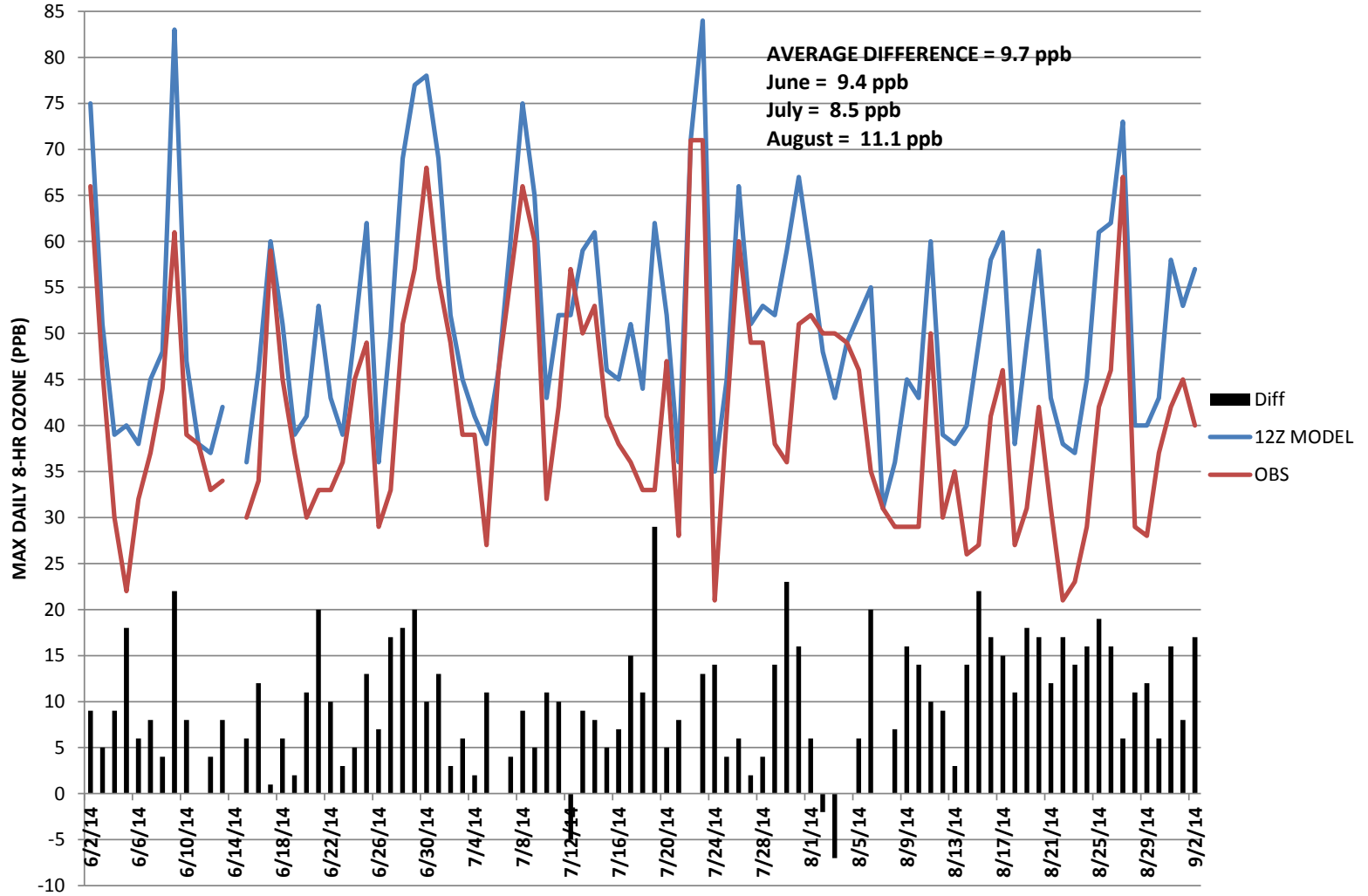
# Mid Coast Region

## Maine Mid Coast Max Daily 8-hr Ozone NOAA 12Z Model Predictions vs Observations



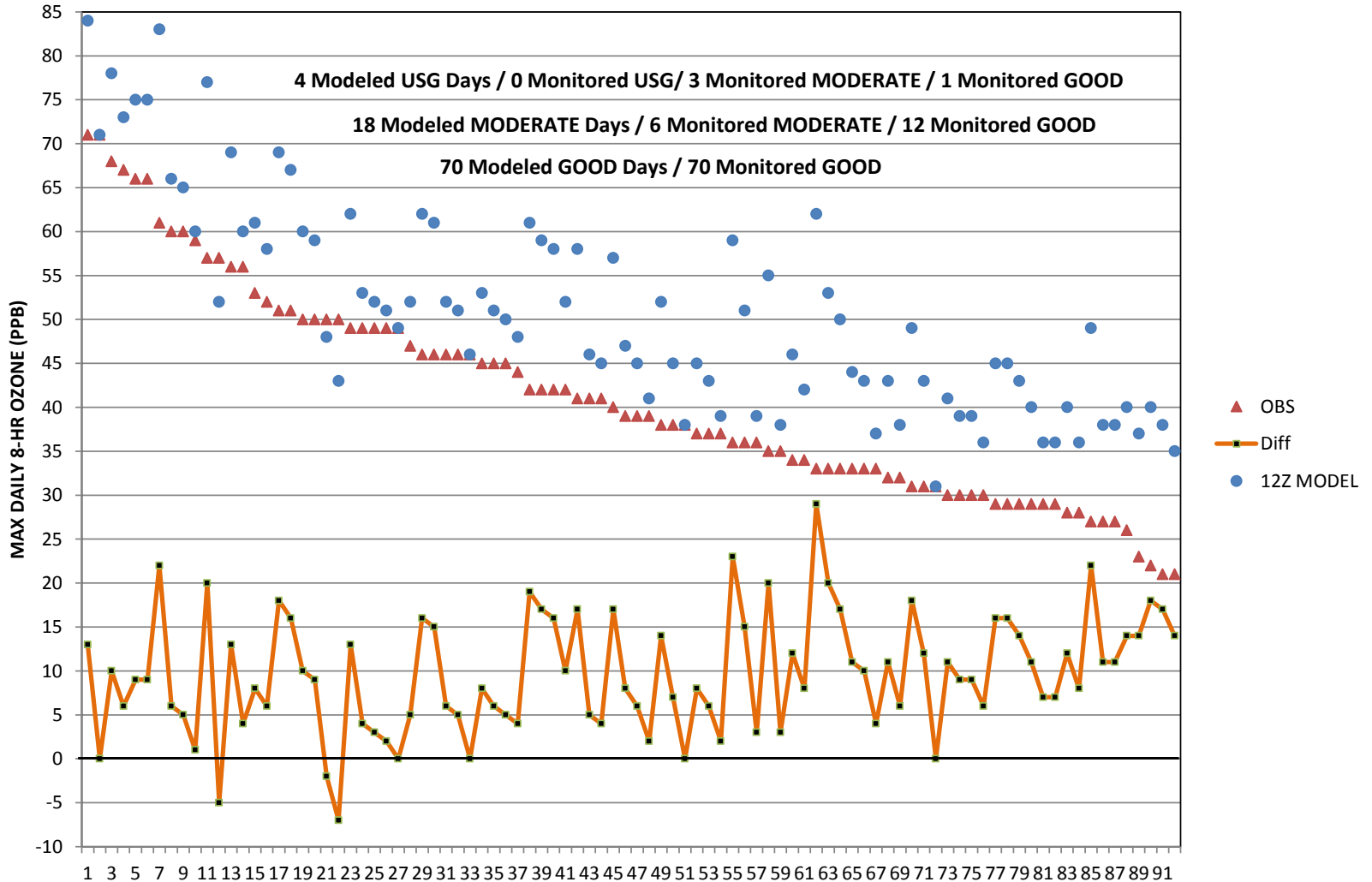
# Southwest Coast Region

## Maine Southwest Coast Max Daily 8-hr Ozone NOAA 12Z Model Predictions vs Observations



# Southwest Coast Region

## Maine Southwest Coast Max Daily 8-hr Ozone NOAA 12Z Model Predictions vs Observations





# Summary

- The bias of the model changes during the ozone season - more so for inland locations
- Knowing the bias of the model in each region helped us this year with our forecasts.
- Of the suite of models we look at to help us forecast, the NOAA model is the most useful.





[tom.downs@maine.gov](mailto:tom.downs@maine.gov)

207-287-7026

[www.maine.gov/dep](http://www.maine.gov/dep)

